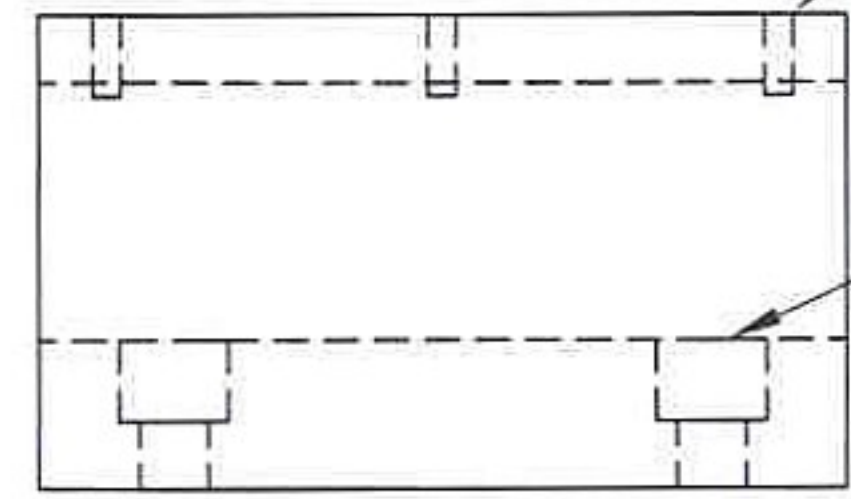
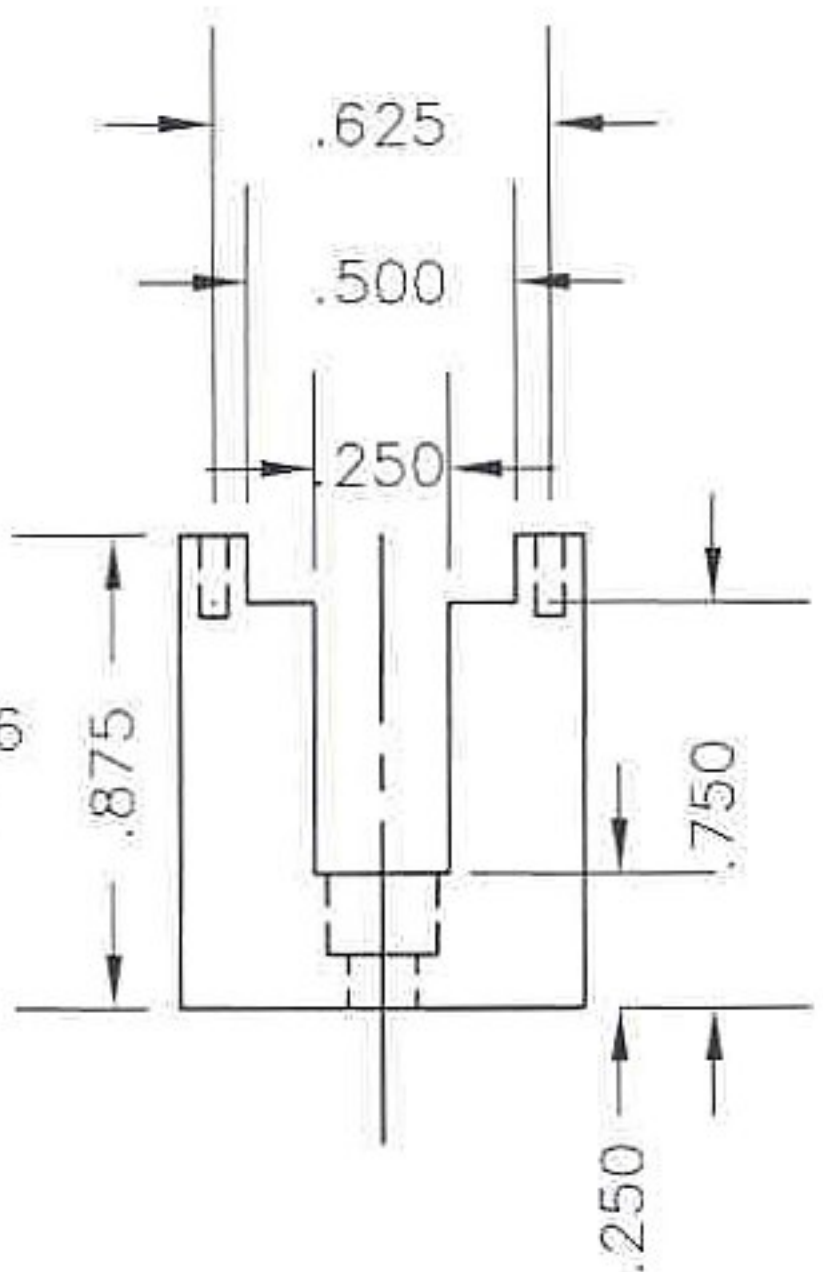


Note: Hole patterns are symmetrical about center lines

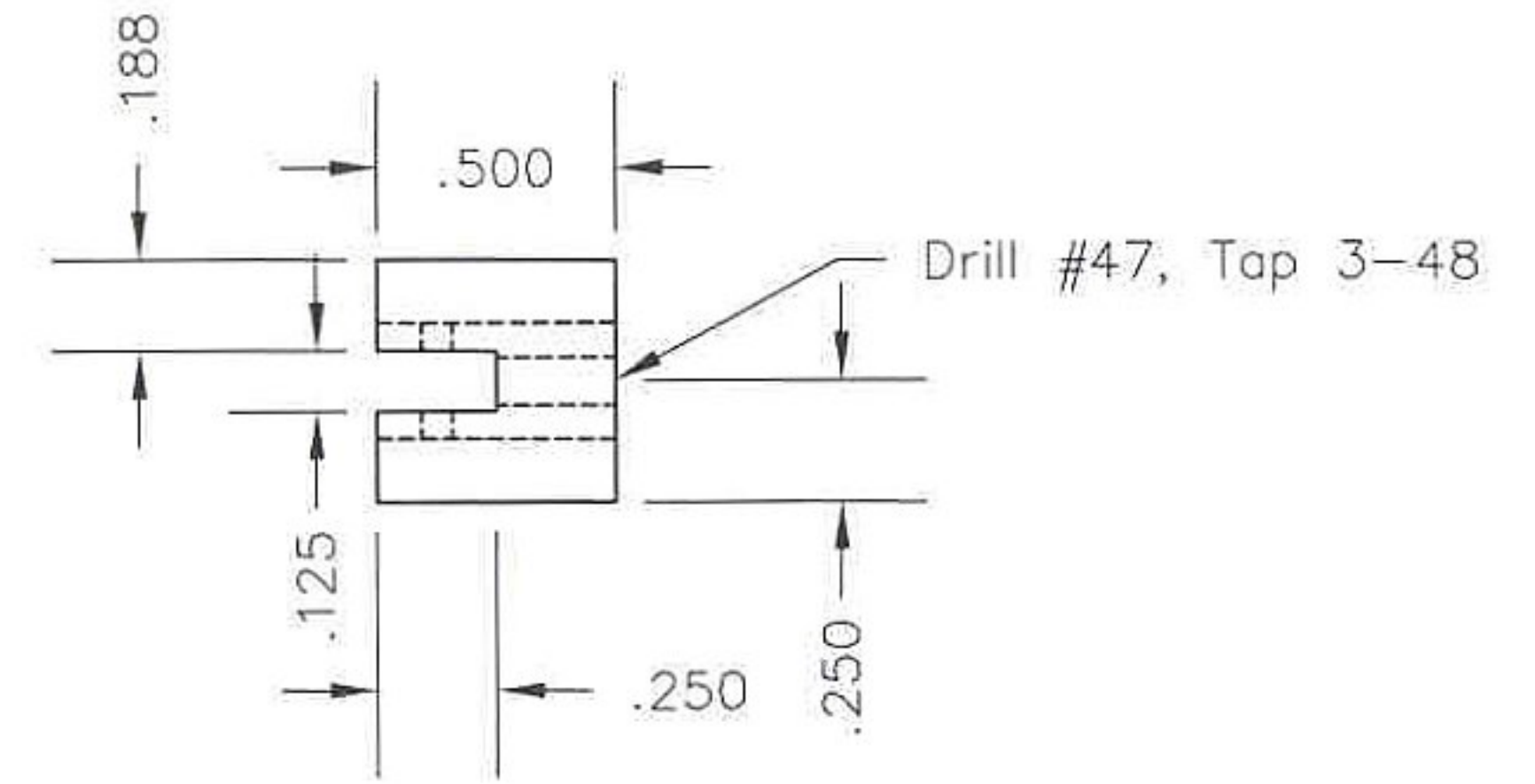
Drill #55, Tap 0-80
.150 Deep
6 places



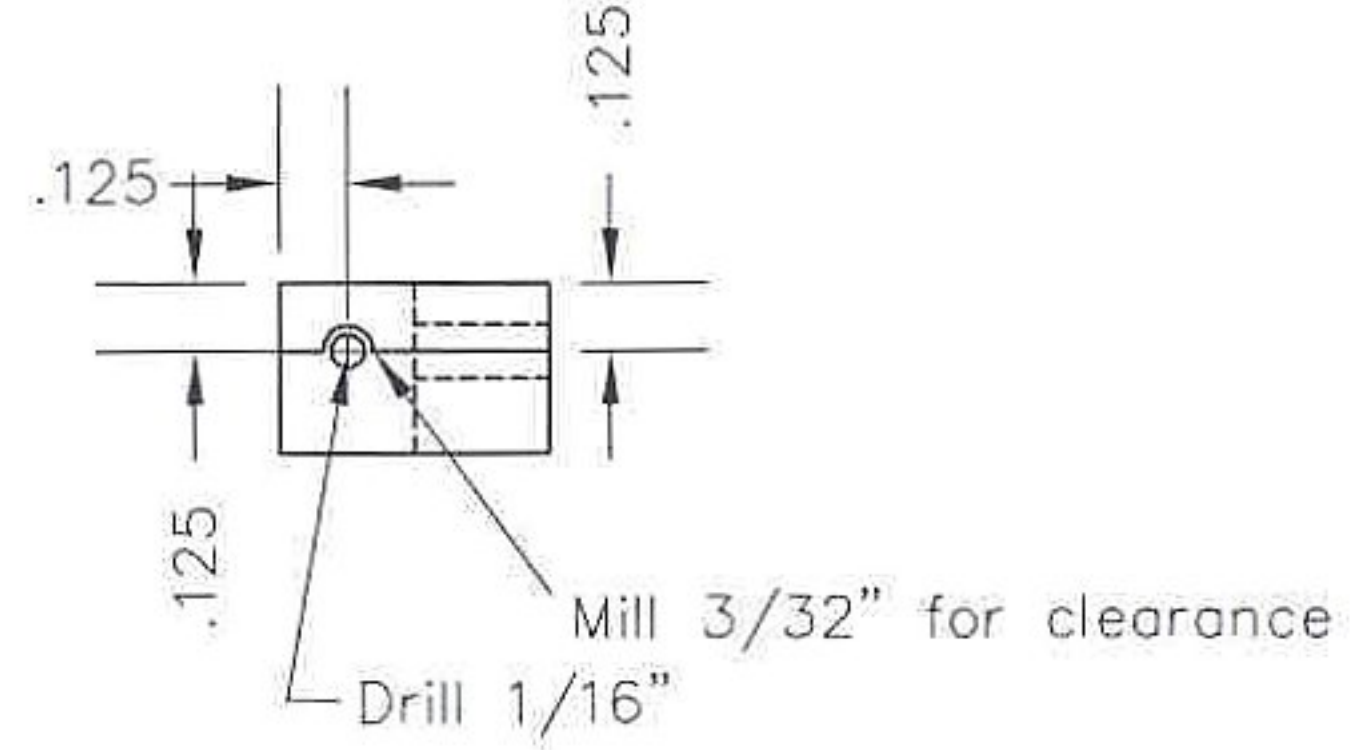
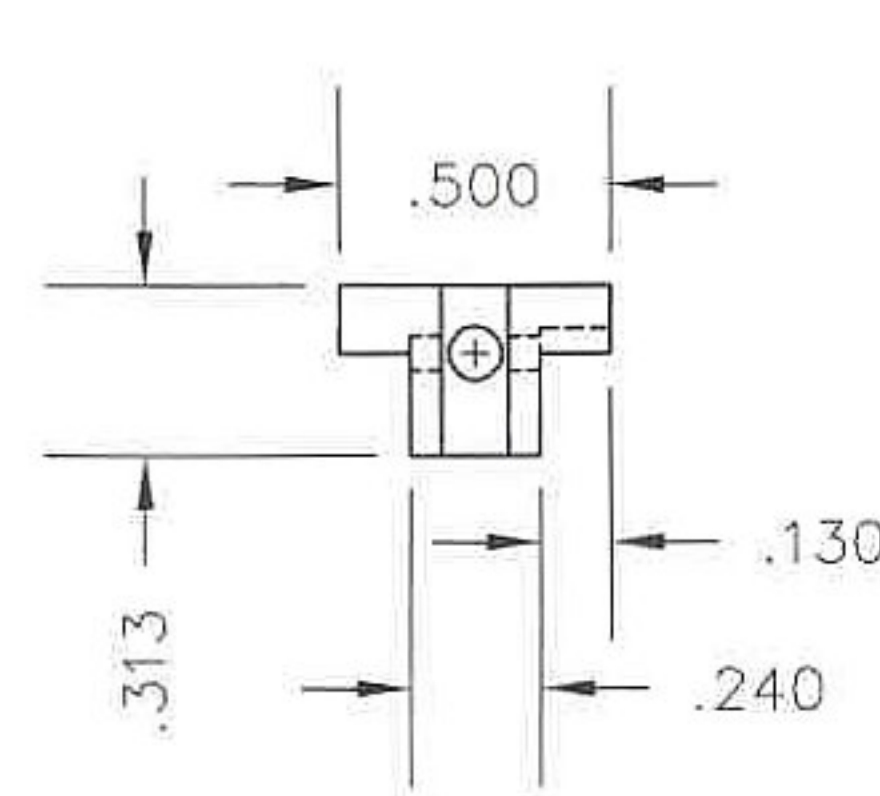
Drill #30, Cntrbore #6
.150" Deep 2 places



Crosshead Guide
Matl. - Steel

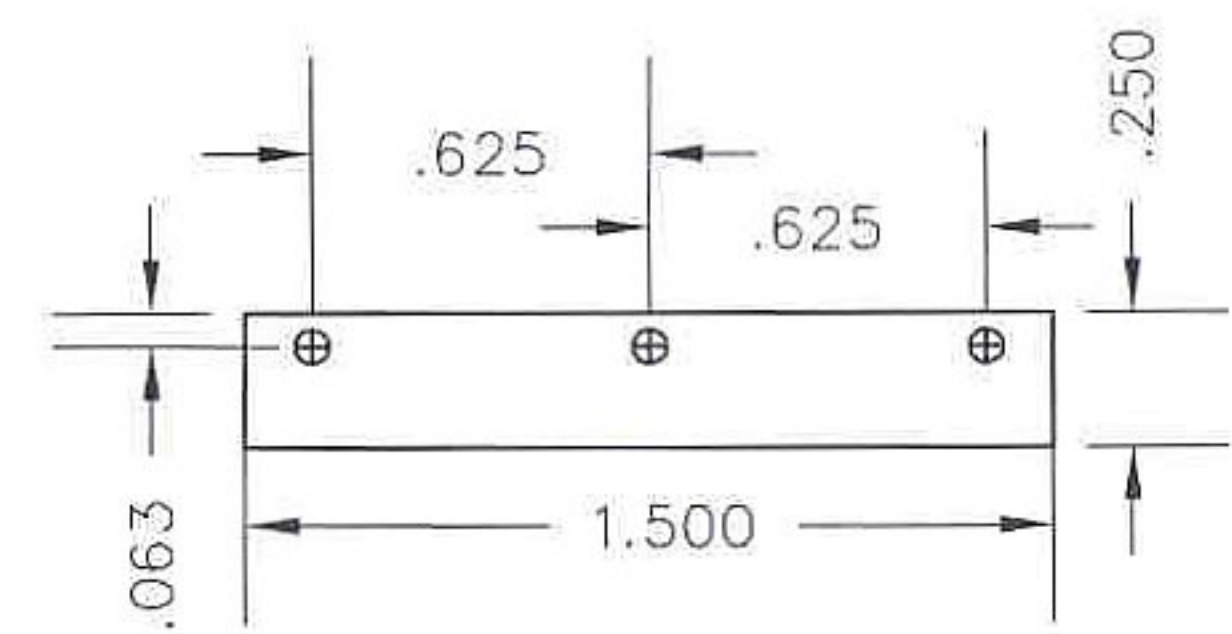


Drill #47, Tap 3-48



Mill 3/32" for clearance
Drill 1/16"

Crosshead
Matl. - Brass



Drill #52 3 places

.063

Crosshead Guide Cap
Matl. - Brass (2 Reqd.)

	Workbench Miniatures		
	Description Mill Engine #1		
	Scale: Full Size	Dwg. ME1-006 No.	
	Sheet: 6 of 11	Date: 11-7-02	Drawn By: WHL